

Hardin County FM-C042(95)--55-42

Letting Date Feb 19, 2019

RCB Culvert Replacement - Single Box

Hardin County Engineer's Office/708 16th Street, Eldora, IA 50627/Phone:(641)858-5058/Fax:(641)858-3182

Project Traffic Control Plan:

This road will be closed to through traffic during construction. Local traffic to adjacent properties will be maintained as provided for in Article 1107.08 of the the current Standard Specifications. The Contractor will provide and maintain all traffic control devices.

Traffic control devices, procedures, layouts, signing, and pavement markings installed within the limits of this project shall conform to the "Manual on Uniform Traffic Control Devices for Streets and Highways" as adopted by the Department per 761 of the Iowa Administrative Code (IAC) chapter 130.

Shop Drawing:

The Contractor shall furnish a shop drawing of the precast box culvert to the Engineer's Office at 708 16th Street, Eldora, IA for approval. The shop drawing must be designed by a licensed professional engineer.

Iowa Department of Transportation Highway Division

Plans of Proposed Improvement on the Farm-to-Market System Hardin County RCB Culvert Replacement - Single Box FM-C042(95)--55-42

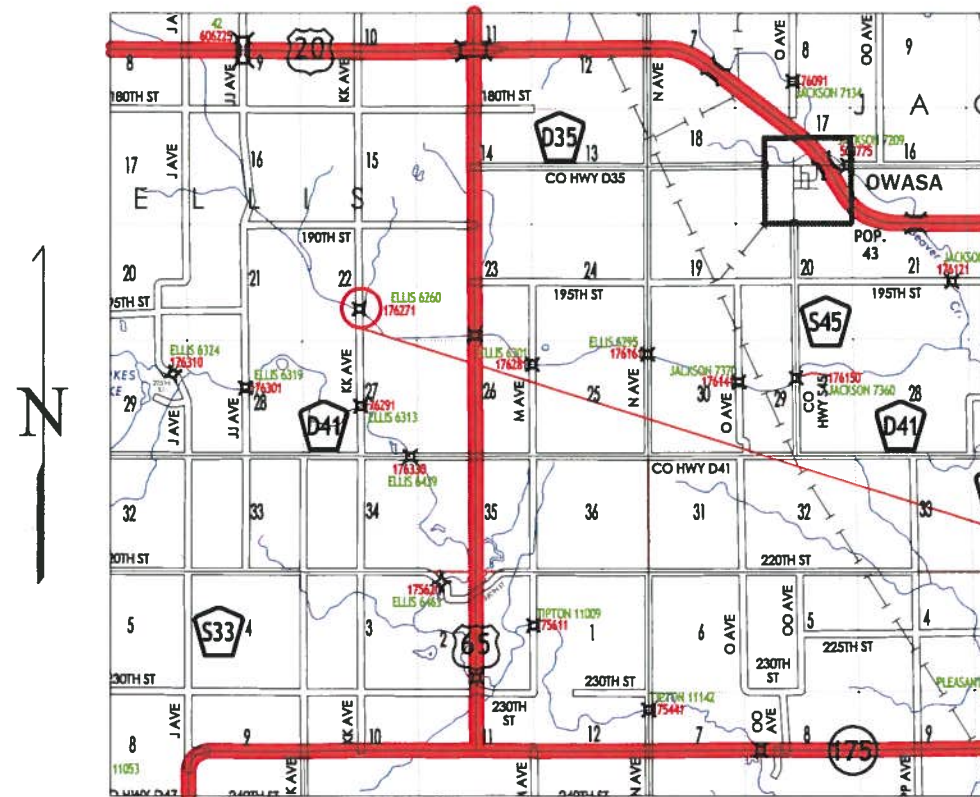
on KK Avenue, over D.D. 48 from Co. Hwy. D41 North 1.25 Miles
Ellis Township (S-22, T-88N, R-21 W)

Refer to the Proposal Form for list of applicable specifications.

Construct this project according to the requirements of U.S. Army Corps of Engineers Nationwide Permit 14,
Permit No. CEMVR-OD-P-2018-1129.
A copy of this permit is available from the Iowa DOT website (<http://www.enrpermits.iowadot.gov/>).
The U.S. Army Corps of Engineers reserves the right to visit the site without prior notice.

Index of Sheets	
No.	Description
1	Title Page
2	Estimated Quantities, Reference & Road Standards
3	General Notes
4	Culvert Notes
5	Typical Sections
6	Plan & Profile
7	Shop Drawing Submittal

Mileage Summary			
Div.	Location	Lin. Ft.	Miles
I	Sta. 13+50 to 16+00	250	0.047
Total Project		250	0.047



LOCATION MAP
NOT TO SCALE (REFERENCE ONLY)
2013 AADT 35 V.P.D.

FHWA # 176271
Station 14+66.48
B.O.P. STA. 13+50
E.O.P. STA. 16+00
Proposed Single 40' x 12' x 10'
Precast Concrete Box Culvert

30° Skew
40'-8" Back-to-Back of Parapet

Utilities	
Company	Contact Information
Centurylink	(800) 778-9140
Midland Power Cooperative	(515) 386-4111

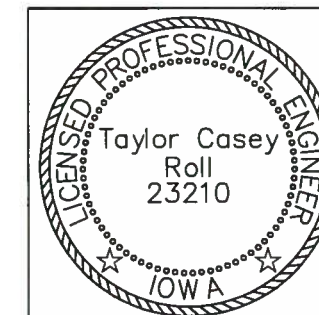


Approved
Board of Supervisors

[Signature]

Renee McCreelan

[Signature]



I hereby certify that this engineering document was prepared by me or under my direct personal supervision and that I am a duly Licensed Professional Engineer under the Laws of the State of Iowa.

[Signature] 11-21-18
Taylor Roll, P.E. Date

License Number : 23210
My license renewal date is December 31, 2019.

Pages or sheets covered by this seal : 1-7